



ACTUALIZACION 2016-2031  
PLANES DE DESARROLLO  
TERRITORIO OPERACIONAL  
VALLENAR

EMPRESA CONSULTORA:



APROBACIÓN AGUAS CHAÑAR S.A.

GERENTE GENERAL AGUAS CHAÑAR

DIBUJO: E.A.C	ESCALA : LAS INDICADAS	LAMINA N° 1 DE 1
REVISION: 5	FECHA MARZO 2017	PROYECTO N°

LAMINA: TOP-53	FECHA: ABRIL 2017	PROYECTO HIDROSAN : 1466-16
5 ABRIL 2017	ATENCION OBS SISS	E.A.C S.O.C. E.S.M.
0 DIC 2015	EMITIDO PARA ENTREGA	I.M.C. P.R.V. E.S.M.
B NOV 2015	EMITIDO PARA REVISION INTERNA	I.M.C. P.R.V. E.S.M.
A NOV 2015	EMITIDO PARA REVISION INTERNA	I.M.C. F.C.G. E.S.M.
REV. FECHA	COMENTARIOS	DIBUJO INGENIERO REVISOR

	TERRITORIO OPERACIONAL
	LIMITE DE SECTORES
	LIMITE URBANO

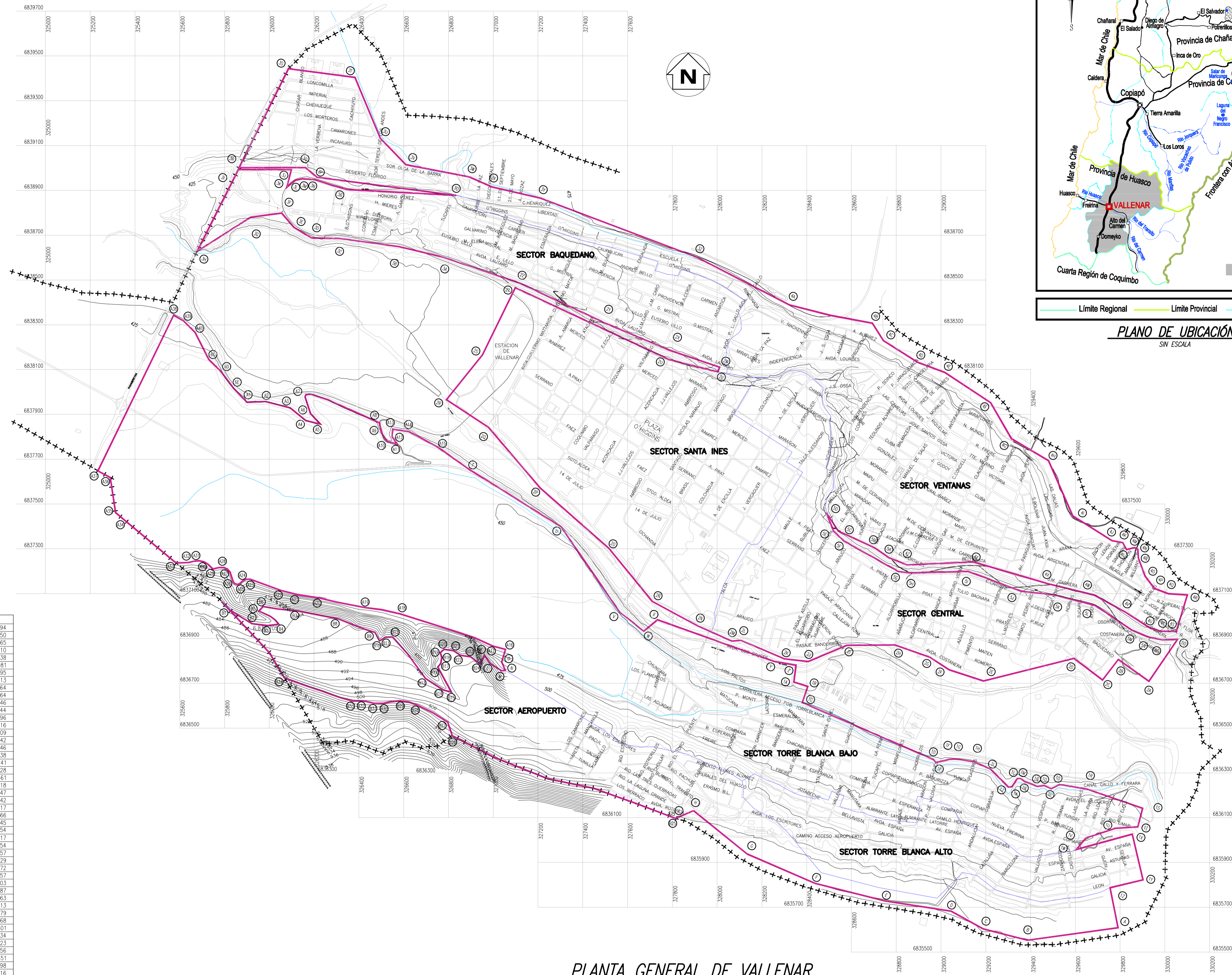
NOTA:  
REFERENCIA IGM: DATUM WGS-84 HUSO 19

**SIMBOLOGIA**

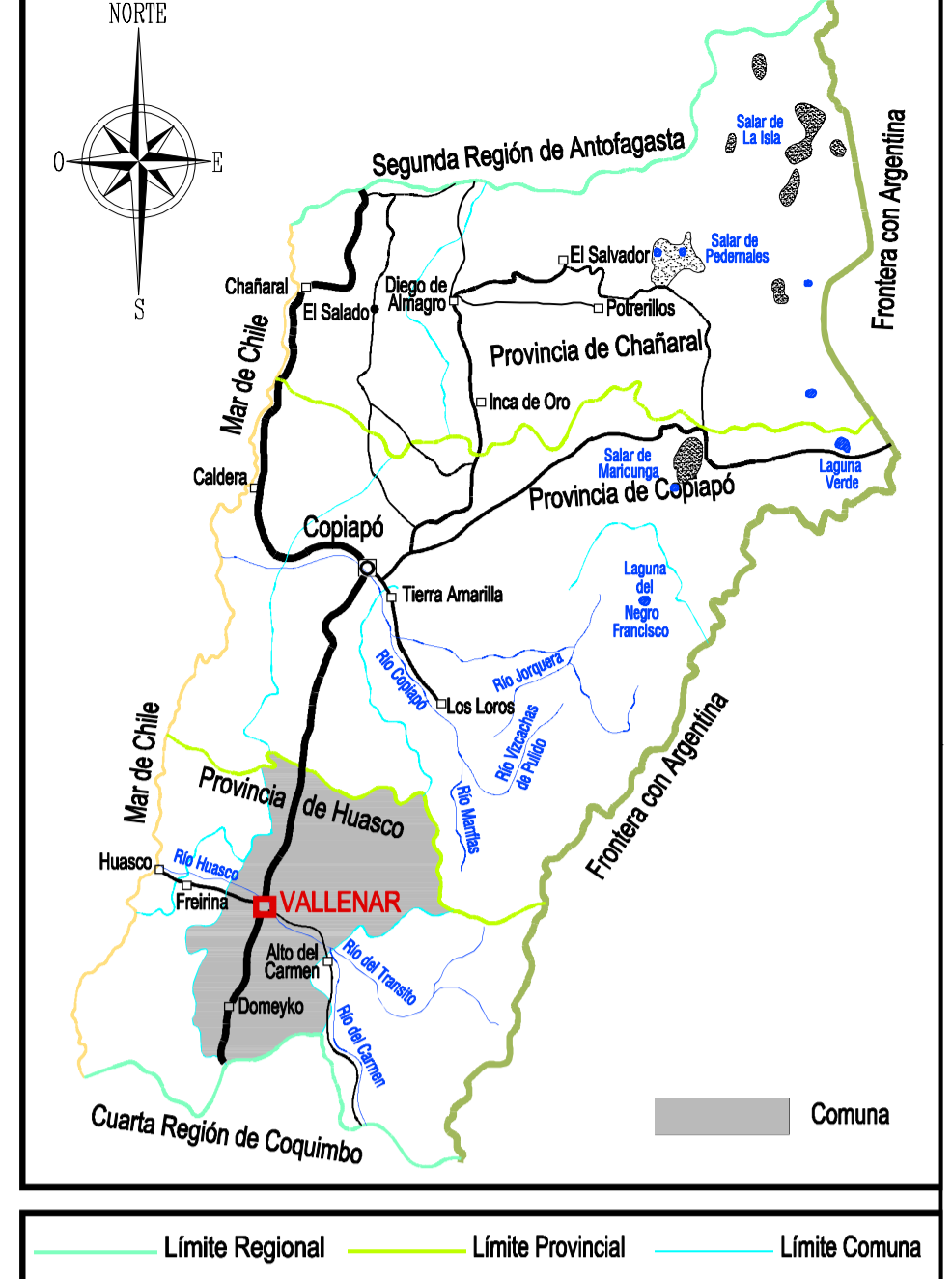
Vertice	Este	Norte	Vertice	Este	Norte	Vertice	Este	Norte	Vertice	Este	Norte
1A	328.342	6.836.705	3D	326.188	6.836.687	5G	328.809	6.837.199	0	327.037	6.836.794
1B	328.404	6.836.685	3E	326.109	6.838.735	5H	328.861	6.837.192	A16	327.054	6.836.850
1C	328.380	6.836.614	3F	326.055	6.838.798	5I	329.121	6.837.199	A17	326.998	6.836.865
1D	329.944	6.836.360	3G	325.916	6.838.780	5J	329.357	6.837.111	A18	326.583	6.837.010
1E	328.977	6.836.346	3H	325.677	6.838.628	5K	329.507	6.837.094	A19	326.426	6.837.038
1F	329.037	6.836.360	3I	325.862	6.838.993	5L	329.687	6.837.047	A20	326.217	6.837.081
1G	329.069	6.836.361	3J	326.098	6.838.992	5M	329.851	6.836.938	A21	326.125	6.837.095
1H	329.146	6.836.349	3K	326.078	6.838.914	5N	329.920	6.836.908	A22	326.052	6.837.113
1I	329.220	6.836.317	3L	326.116	6.838.945	5O	329.986	6.836.894	A23	325.914	6.837.164
1J	329.301	6.836.236	3M	326.147	6.838.951	5P	330.056	6.836.895	A24	325.896	6.837.164
1K	329.317	6.836.238	3N	326.203	6.838.947	A	329.790	6.835.609	A25	325.869	6.837.146
1L	329.339	6.836.274	3O	326.248	6.838.903	B	329.386	6.835.352	A26	325.844	6.837.144
1M	329.354	6.836.274	3P	326.834	6.839.877	C	329.188	6.835.603	A27	325.824	6.837.196
1N	329.374	6.836.260	3Q	326.212	6.838.958	D	329.045	6.835.682	A28	325.797	6.837.216
1N	329.430	6.836.239	3Q	326.161	6.839.001	E	328.750	6.835.728	A29	325.747	6.837.209
1O	329.461	6.836.243	3R	326.865	6.839.001	F	328.437	6.835.906	A30	325.707	6.837.242
1P	329.492	6.836.278	3S	326.985	6.839.443	G	328.133	6.835.938	A31	325.686	6.837.246
1Q	329.529	6.836.247	3T	326.382	6.839.404	H	327.894	6.836.131	A32	325.639	6.837.238
1R	329.651	6.836.227	3U	326.495	6.839.133	I	327.828	6.836.102	A33	325.577	6.837.241
1S	329.900	6.836.142	3V	326.809	6.839.015	B25	327.814	6.836.096	A34	325.552	6.837.428
1T	329.879	6.836.059	3W	326.892	6.838.960	B26	328.816	6.836.466	A35	325.531	6.837.461
1U	329.778	6.836.052	3X	326.993	6.838.915	B27	326.797	6.836.525	A36	325.289	6.837.618
1V	329.647	6.836.008	3Y	327.211	6.838.865	B28	326.661	6.836.602	A37	325.234	6.837.647
1W	329.604	6.835.958	3Z	327.911	6.838.601	B29	326.583	6.836.621	A38	325.572	6.836.342
1X	329.854	6.836.026	4A	328.321	6.838.989	B30	326.508	6.836.610	A39	325.816	6.836.317
1Y	329.902	6.835.922	4B	328.693	6.838.307	B31	326.468	6.836.610	A40	325.668	6.836.266
1Z	329.755	6.835.787	4C	328.742	6.838.229	B32	326.418	6.836.620	6C	325.730	6.838.145
2A	329.928	6.836.708	4D	328.895	6.838.132	B33	326.371	6.836.621	6D	325.783	6.838.054
2B	329.791	6.836.805	4E	329.017	6.838.086	B34	326.066	6.836.774	6E	325.839	6.838.017
2C	329.721	6.836.714	4F	329.221	6.837.952	B1	325.825	6.837.026	A1	325.900	6.837.954
2D	329.593	6.836.811	4G	329.314	6.837.791	B2	325.922	6.836.966	A2	325.982	6.837.957
2E	329.189	6.836.710	4H	329.479	6.837.693	B3	325.992	6.836.957	A3	326.092	6.837.929
2F	329.036	6.836.760	4I	329.588	6.837.447	B4	326.041	6.836.963	A4	326.163	6.837.872
2G	328.949	6.836.816	4J	329.753	6.837.336	B5	325.953	6.837.022	A5	326.227	6.837.857
2H	328.793	6.836.870	4K	329.811	6.837.327	B6	325.971	6.837.042	A6	326.184	6.837.903
2I	328.578	6.836.869	4L	329.828	6.837.296	B7	326.123	6.837.023	A7	326.163	6.837.987
2J	328.406	6.836.796	4M	329.865	6.837.305	B8	326.307	6.836.987	A8	326.490	6.837.863
2K	328.300	6.836.809	4N	329.878	6.837.298	B9	326.472	6.836.976	A9	326.503	6.837.813
2L	328.107	6.836.891	4N	329.881	6.837.259	B10	326.492	6.836.889	A10	326.526	6.837.779
2M	328.065	6.836.888	4O	329.911	6.837.178	B11	326.518	6.836.905	A11	326.571	6.837.768
2N	327.913	6.836.955	4P	329.952	6.837.123	B12	326.550	6.836.906	A12	326.548	6.837.801
2O	327.710	6.836.955	4Q	330.015	6.837.099	B13	326.697	6.836.721	A13	326.551	6.836.834
2P	327.516	6.837.302	4R	330.099	6.837.094	B14	326.777	6.836.670	A14	326.622	6.837.823
2Q	327.210	6.837.571	4S	330.050	6.836.931	B15	326.813	6.836.660	A15	326.748	6.837.756
2R	326.978	6.837.842	4T	329.981	6.836.931	B16	326.752	6.836.771	T	326.897	6.837.651
2S	326.715	6.837.965	4U	329.918	6.836.949	B17	326.705	6.836.789	U	327.302	6.837.508
2T	326.551	6.838.165	4V	329.824	6.837.016	B18	326.769	6.836.815	V	327.566	6.837.016
2U	327.098	6.838.465	4W	329.685	6.837.093	B19	326.763	6.836.836	W	327.672	6.836.932
2V	327.786	6.838.144	4X	329.482	6.837.142	B20	326.780	6.836.851	X	327.733	6.836.983
2W	328.002	6.838.089	4Y	329.144	6.837.241	B21	326.823	6.836.845	Y	328.255	6.836.797
2X	328.011	6.838.110	4Z	328.848	6.837.228	B22	326.854	6.836.824	Z	328.352	6.836.780
2Y	327.992	6.838.184	5A	328.766	6.837.260	B23	326.899	6.836.817			
2Z	327.996	6.838.308	5B	328.703	6.837.304	B24	326.943	6.836.783			
3A	327.120	6.836.886	5C	328.541	6.837.379	K	326.960	6.836.825			
3B	326.715	6.836.602	5D	328.458	6.837.461	L	326.986	6.836.787			
3C	326.580	6.836.648	5E	328.518	6.837.379	M	327.037	6.836.755			
3D	326.317	6.836.685	5F	328.566	6.837.335	N	327.053	6.836.756			

CUADRO DE SUPERFICIE	
VERTICES	AREA
1A al Z	833.5 Has

**COORDENADAS DE VERTICES  
TERRITORIO OPERACIONAL  
VALLENAR**



**PLANTA GENERAL DE VALLENAR**  
**TERRITORIO OPERACIONAL**  
ESCALA 1:10.000



**PLANO DE UBICACIÓN**  
SIN ESCALA